

## THOR – jaw and cone crusher liners made from inoculated austenitic manganese steel

### Game-changing solution

THOR steel jaw and cone crusher liners allow end users to cut their costs in two ways. First, a straightforward lining expenses reduction is obtained with a smaller annual consumption of liner sets. Second, due to longer achieved operating time less equipment downtime for liner changeout is required.

### Upgraded casting technology

Complex inoculation process we use allows forming unique crystallization conditions for manganese steels. We obtain fine-grained microstructure that supports higher strength of castings. Combined with in-ladle removal of tramp elements and non-metallic inclusions this gives THOR castings higher tensile strength, better abrasion resistance, and longer overall lifetime compared to regular liners.

## Advantages of THOR liners:



**Longer  
product lifetime**

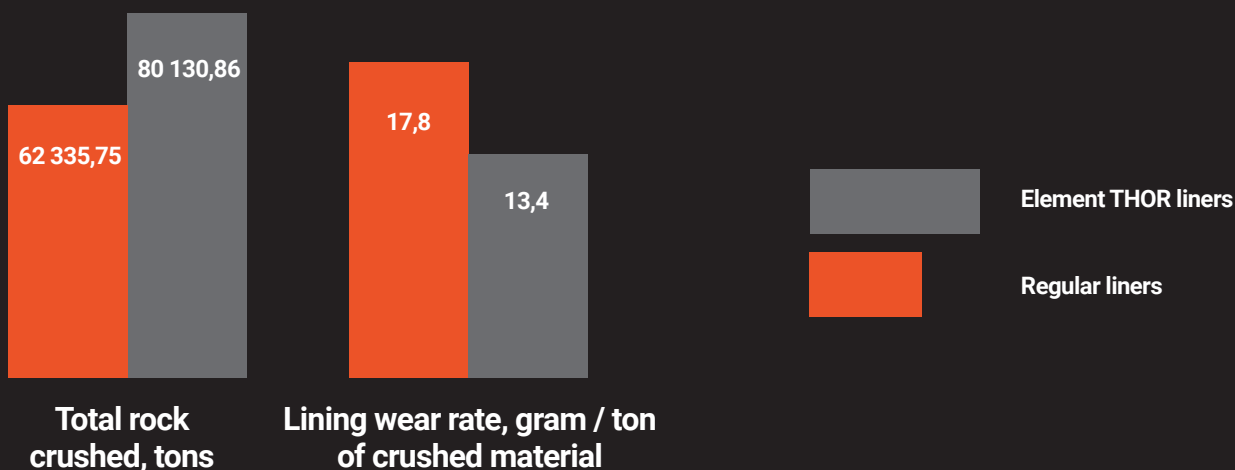


**Lower  
production costs**



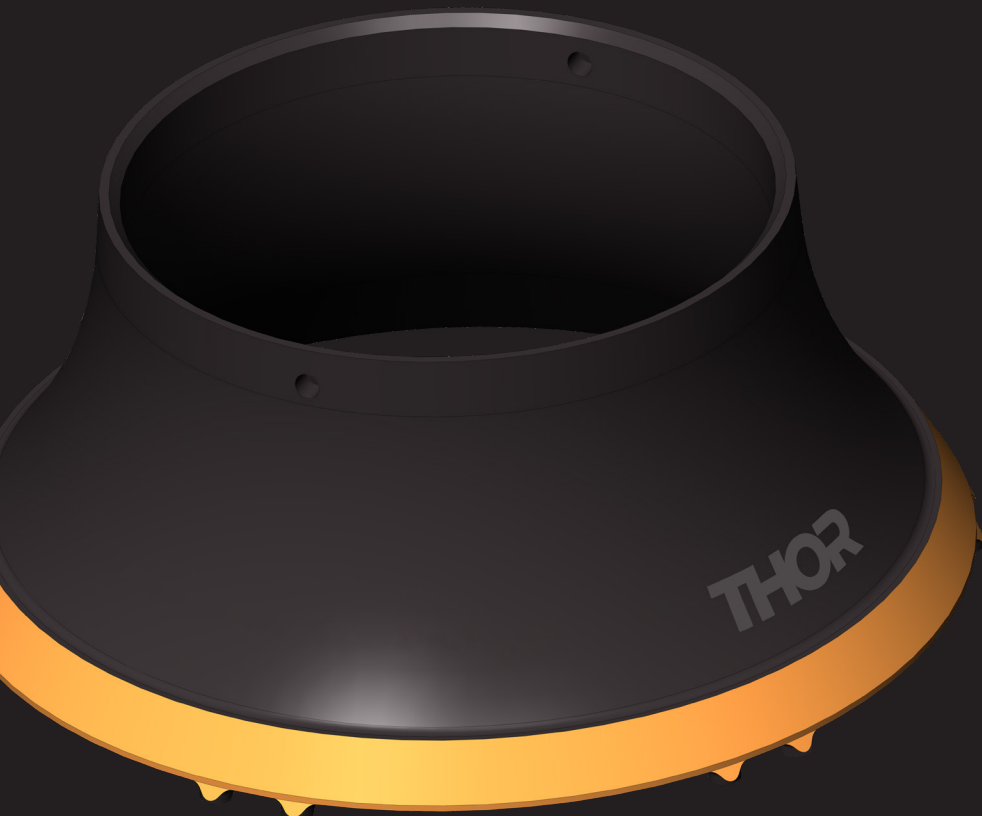
**Reduced number  
of maintenance outages**

## Test results\*:



\* Based on trials of 6 sets of THOR cone medium coarse crusher liners in 2019.

**element**<sup>®</sup>  
Integrity in details  
[www.element.global](http://www.element.global)



**Element Group Oy**

Address: Peltokatu 26

33100 Tampere

Phone: +358 10 340 3980

Email: [info@element.global](mailto:info@element.global)